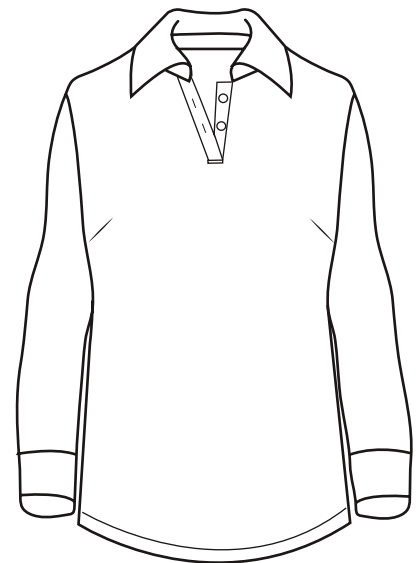




## BG6502 Ladies' Soft Touch L/S Pique Polo

- 65/35 poly/cotton blend
- Easy care
- 5.5 ounce pique
- Wrinkle resistant
- Rib knit collar & cuffs
- Curl free collar
- Matching buttons
- Side vents
- Taped neck & shoulders
- Tag free label
- No pocket
- 2 button placket
- Sizes: S-4XL
- Classic fit



Nothing tops this ladies long-sleeve pocketless pique polo! Made of 65% polyester/35% cotton blend, this 5.5 oz. easy-care shirt is contrasted from a breathable, wrinkle-resistant fabric. It features a rib-knit collar, banded sleeves, a straight bottom, side vents, taped neck and shoulders and matching buttons. Available in several colors (red, black, navy, royal blue, white) and sizes (S-4XL), this stylish item will turn plenty of heads!



\*Discontinued/Closeout color. Please see similar style BG6207. Call or login to [BlueGeneration.com](http://BlueGeneration.com) for more info.

### LADIES' SIZES

	XS (2)	S (4-6)	M (8-10)	L (12-14)	XL (16-18)	2XL (20-22)	3XL (24-26)	4XL (28-30)	5XL (32-34)
BUST	30-31	32-33	34-35	36-38	40-42	44-46	48-50	52-54	56-58
SLEEVE	31	31.5	32	32.5	33	33.5	34	34.5	—
BOTTOM	31-32	33-34	35-36	37-39	41-43	45-47	49-51	53-55	—