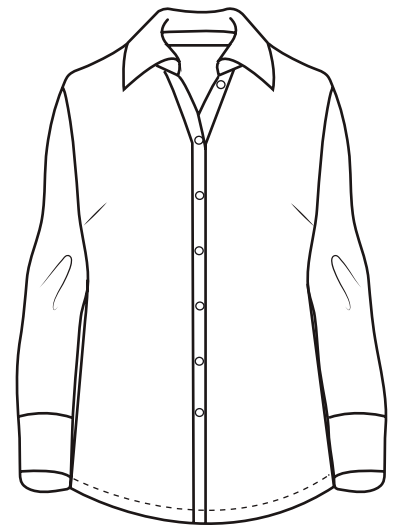




BG6216 Ladies' L/S Superblend Poplin Shirt with Bone Buttons

- 65/35 Poly/cotton blend
- Easy care
- Stain release
- Wrinkle resistant
- Lightweight 5.5 ozs.
- 2 side back pleats
- Double back yoke
- Spread collar
- Bone buttons
- No pocket
- Sizes: XS-4XL
- Classic fit



Lightweight in warmth but heavy in style, this ladies 5.5 oz. long-sleeve shirt will make a great impression regardless of the occasion! Made of a 65% polyester/35% cotton blend, this eye-catching dress shirt has stain-release technology and is both wrinkle and crease resistant. It features a double-back yoke, two side back pleats, a straight hemmed bottom, bone-horn buttons, adjustable cuffs and a spread collar. Available in several colors and in sizes from XS to 4XL, this fashionable item is perfect fit for any wardrobe.



LADIES' SIZES

| | XS (2) | S (4-6) | M (8-10) | L (12-14) | XL (16-18) | 2XL (20-22) | 3XL (24-26) | 4XL (28-30) | 5XL (32-34) |
|--------|--------|---------|----------|-----------|------------|-------------|-------------|-------------|-------------|
| BUST | 30-31 | 32-33 | 34-35 | 36-38 | 40-42 | 44-46 | 48-50 | 52-54 | 56-58 |
| SLEEVE | 31 | 31.5 | 32 | 32.5 | 33 | 33.5 | 34 | 34.5 | — |
| BOTTOM | 31-32 | 33-34 | 35-36 | 37-39 | 41-43 | 45-47 | 49-51 | 53-55 | — |