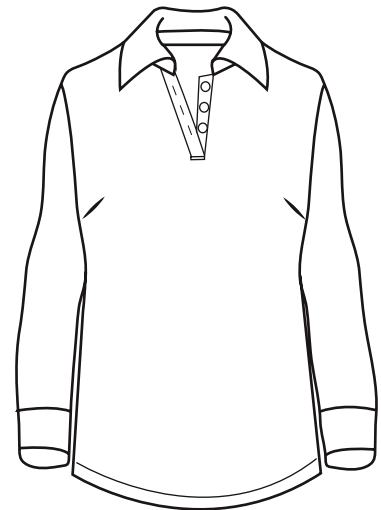




## BG6207 Ladies' Superblend L/S Polo

- 60/40 Poly/cotton blend
- Easy care
- Stain release
- Wrinkle resistant
- Curl free collar
- Rib knit collar & cuffs
- Bone buttons
- 6.7 ounce pique
- Reinforced side vents
- Taped neck & shoulders
- Ladies style
- Sizes: S-4XL
- Classic fit



A perfect fit for the golf course and beyond, this 6.7 oz. ladies' long-sleeve easy-care pique polo will show off serious style. Made from a 60% cotton/40% polyester blend, this pocketless piece of apparel is wrinkle resistant and available in several colors and sizes (S-4XL). It features a curl-free collar, a straight button, reinforced side vents, a taped neck and shoulders and bone-horn button. It also has stain-release technology. Don't miss out on this wow-worthy wearable!



\*Discontinued/Closeout color. Please call or login to [BlueGeneration.com](http://BlueGeneration.com) for more info.

### LADIES' SIZES

	XS (2)	S (4-6)	M (8-10)	L (12-14)	XL (16-18)	2XL (20-22)	3XL (24-26)	4XL (28-30)	5XL (32-34)
BUST	30-31	32-33	34-35	36-38	40-42	44-46	48-50	52-54	56-58
SLEEVE	31	31.5	32	32.5	33	33.5	34	34.5	—
BOTTOM	31-32	33-34	35-36	37-39	41-43	45-47	49-51	53-55	—