

LILAC BLOOM

2020 COLLECTION



 lilac bloom®
by jennifer tsai



Lilac Bloom's core value is to help women look and feel great wherever the day takes them! We create branded apparel that is elegant, feminine and stylish, and we pride ourselves on quality fabrications, flattering fits, timeless fashion and comfort.

In our ninth year, Lilac Bloom Women's Collection debuts five beautiful styles that are modern, comfy and flattering - the best combo when it comes to women's wear in our opinion! Here's what you have to look forward to: A twist knot top (LB004 Aria), a sleeveless dress with something we all love - pockets! (LB684 Maya), a sporty chic quilted vest (LB8252 Harper), a stunning REVERSIBLE matte satin bomber jacket (LB8872 Aviya), and a luxurious soft shell velour hooded jacket (LB8988 Sienna) to keep you warm, cozy and looking sharp. We hope you love the new collection as much as we do. We are honored you've chosen us to represent your brand and identity, and we thank you for your love and excitement for Lilac Bloom!

 Jennifer



lilac bloom[®]
by jennifer tsai

4 KNITS

15 WOVENS

24 SWEATERS

30 OUTERWEAR

Lilac Bloom by Jennifer Tsai[®] is our revolutionary apparel line aimed exclusively at the modern working woman. Designed in Los Angeles by an all-female team, Lilac Bloom features items that are stylish, confident, and comfortable.

NEW

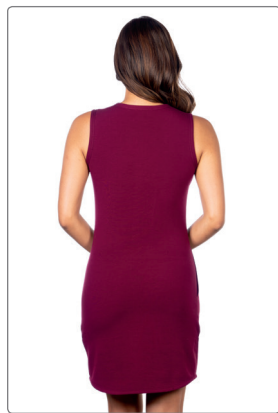
LB684 Maya Sleeveless Dress

- 8.1 oz. 60% polyester/35% rayon/5% spandex fleece
- Bust darts and two side seam pockets
- Crewneck with drop tail hem

SIZES XS-4XL

DECORATION **EMB** **HT** **BHT**

PCS (P)	1-49	50-299	300-799	800+
XS-XL	\$35.50	\$33.50	\$31.50	\$29.50
2XL-4XL	add \$2.00 each size up			



Back



Side seam pocket



NEW



**LB004
Aria**

Women's Twist Front Top

- 6.7 oz. 95% rayon/5% spandex
- Ultra soft jersey knit
- Rounded neckline and open sleeves
- Knot is sewn down inside for easy care

SIZES XS-4XL

DECORATION **EMB** **HT** **BHT**

PCS (P)	1-49	50-299	300-799	800+
XS-XL	\$35.50	\$33.50	\$31.50	\$29.50
2XL-4XL	add \$2.00 each size up			


Black

Navy

Pewter

Red

Sea Breeze



Back



Front Knot Detail

LB002

Chloe

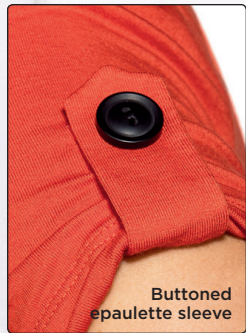
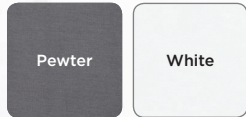
Women's Pocketed V-Neck Top

- 6.7 oz. 95% rayon/5% spandex ultra soft jersey knit
- Faux buttoned epaulette sleeves for a fashionable look

SIZES XS-4XL

DECORATION EMB HT BHT

PCS (P)	1-49	50-299	300-799	800+
XS-XL	\$33.50	\$31.50	\$29.50	\$27.50
2XL-4XL	add \$2.00 each size up			



**ULTRA SOFT
KNIT JERSEY TOPS**

LB008 Colette

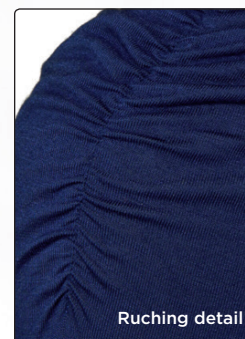
Women's Ruched Long Sleeve Crewneck Top

- 6.7 oz. 95% rayon/5% spandex ultra soft jersey knit
- Ruching along raglan sleeves adds feminine flair
- Open cuffs and bottom

SIZES XS-4XL

DECORATION EMB HT BHT

PCS (P)	1-49	50-299	300-799	800+
XS-XL	\$35.50	\$33.50	\$31.50	\$29.50
2XL-4XL	add \$2.00 each size up			



LB012

Jasmine

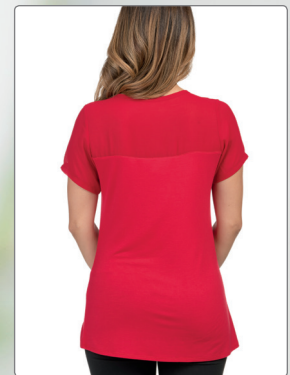
Women's Sheer Panel Knit Top

- 6.7 oz. 95% rayon/5% spandex
- Ultra soft knit jersey
- Sheer polyester top panel
- Crew neck, drop tail sweep

SIZES XS-4XL

DECORATION EMB HT BHT

PCS (P)	1-49	50-299	300-799	800+
XS-XL	\$33.50	\$31.50	\$29.50	\$27.50
2XL-4XL	add \$2.00 each size up			



Back



Shoulder detail

MOVE
FASHION FORWARD

Shown with embroidery (for reference only; garments are blank)

LB079

Alexandra

Women's Split Neck Top

- 6.7 oz. 95% rayon/5% spandex
- Ultra soft knit jersey
- Faux chest pockets
- Buttoned cuffs, rounded sweep

SIZES XS-4XL

DECORATION		EMB	HT	BHT
PCS (P)	1-49	50-299	300-799	800+
XS-XL	\$39.50	\$37.50	\$35.50	\$33.50
2XL-4XL	add \$3.00 each size up			



Back



Shown with embroidery (for reference only; garments are blank)



LB076 Penelope

Women's Y-Neckline Knit Top

- 6.7 oz. 95% rayon/5% spandex
- Ultra soft knit jersey
- 3 button placket along Y-neckline
- 3/4 sleeves with tab closures
- Front darts and back princess seams
- Back yoke and rounded sweep

SIZES XS-4XL

DECORATION EMB HT BHT

PCS (P)	1-49	50-299	300-799	800+
XS-XL	\$45.00	\$42.50	\$40.00	\$37.50
2XL-4XL	add \$3.00 each size up			



Back



Sleeve detail

LB146

Taryn

Women's Long Sleeve
Pocketed Crewneck

- 6.2 oz. 95% cotton/5% spandex jersey knit
- Kangaroo pocket
- Contrast cover-stitching
- Open cuffs and bottom

SIZES XS-4XL

DECORATION **EMB** **HT** **BHT**

PCS (P)	1-49	50-299	300-799	800+
XS-XL	\$30.00	\$28.50	\$27.00	\$25.50
2XL-4XL	add \$2.00 each size up			



LB246

Nina

Women's Heather Knit Long Sleeve Top

- 6.7 oz. 53% rayon/44% polyester/3% spandex knit
- Self-fabric collar
- Open cuffs and rounded sweep

SIZES XS-4XL

DECORATION EMB

PCS (P)	1-49	50-299	300-799	800+
XS-XL	\$30.00	\$28.50	\$27.00	\$25.50
2XL-4XL	add \$2.00 each size up			



THE COZY CREWNECK



Back



LB113

Lucy

Women's Sleeveless Split Neck Top

- 6.7 oz. 95% cotton/5% spandex jersey knit
- Square bottom with side vents

SIZES XS-4XL

DECORATION **EMB** **HT** **BHT**

PCS (P)	1-49	50-299	300-799	800+
XS-XL	\$30.00	\$28.50	\$27.00	\$25.50
2XL-4XL	add \$2.00 each size up			



LB134

Sofia

Women's 3/4 Sleeve Split Neck Top

- 6.7 oz. 95% cotton/5% spandex jersey knit
- Raglan sleeves, open cuffs and bottom

SIZES XS-4XL

DECORATION **EMB** **HT** **BHT**

PCS (P)	1-49	50-299	300-799	800+
XS-XL	\$35.50	\$33.50	\$31.50	\$29.50
2XL-4XL	add \$2.00 each size up			



LB713 Bella

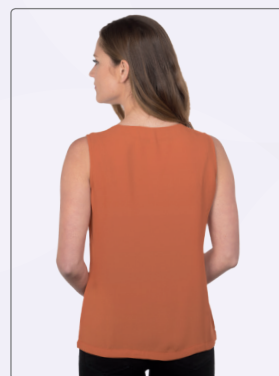
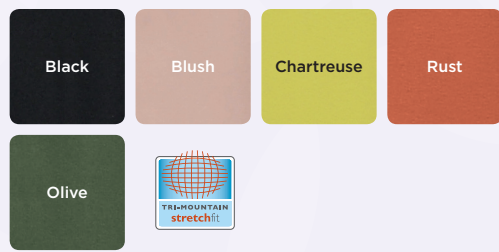
Women's Sleeveless V-Neck Blouse

- 6 oz. 92% polyester/8% spandex
- Faux placket and slightly rounded sweep
- Bust darts

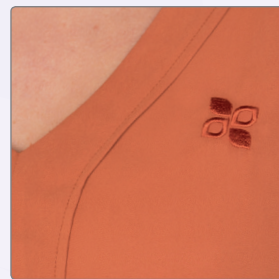
SIZES XS-4XL

DECORATION EMB HT BHT

PCS (P)	1-49	50-299	300-799	800+
XS-XL	\$35.50	\$33.50	\$31.50	\$29.50
2XL-4XL	add \$2.00 each size up			



Back



Placket Detail
Shown with embroidery (for reference only; garments are blank)

LB728 Giselle

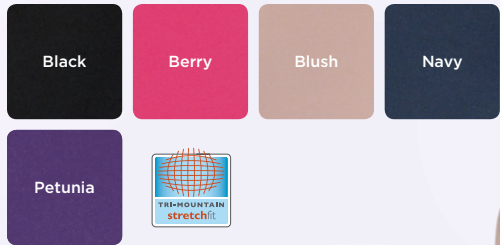
Women's Short Sleeve V-Neck Blouse

- 6 oz. 92% polyester/8% spandex
- Raglan sleeves with self-fabric cuffs
- Bust darts and rounded sweep

SIZES XS-4XL

DECORATION EMB HT BHT

PCS (P)	1-49	50-299	300-799	800+
XS-XL	\$37.50	\$35.50	\$33.50	\$31.50
2XL-4XL	add \$3.00 each size up			



Back

LB708

Elle

Women's Scoop Neck Blouse

- 5.1 oz. 95% polyester/5% spandex
- Pleated cap sleeves and bust darts

SIZES XS-4XL

DECORATION EMB HT LZR BHT

PCS (P)	1-49	50-299	300-799	800+
XS-XL	\$43.00	\$40.50	\$38.00	\$35.50
2XL-4XL	add \$3.00 each size up			



Black



Gray



Hibiscus



Navy



Red

LB756 Reagan

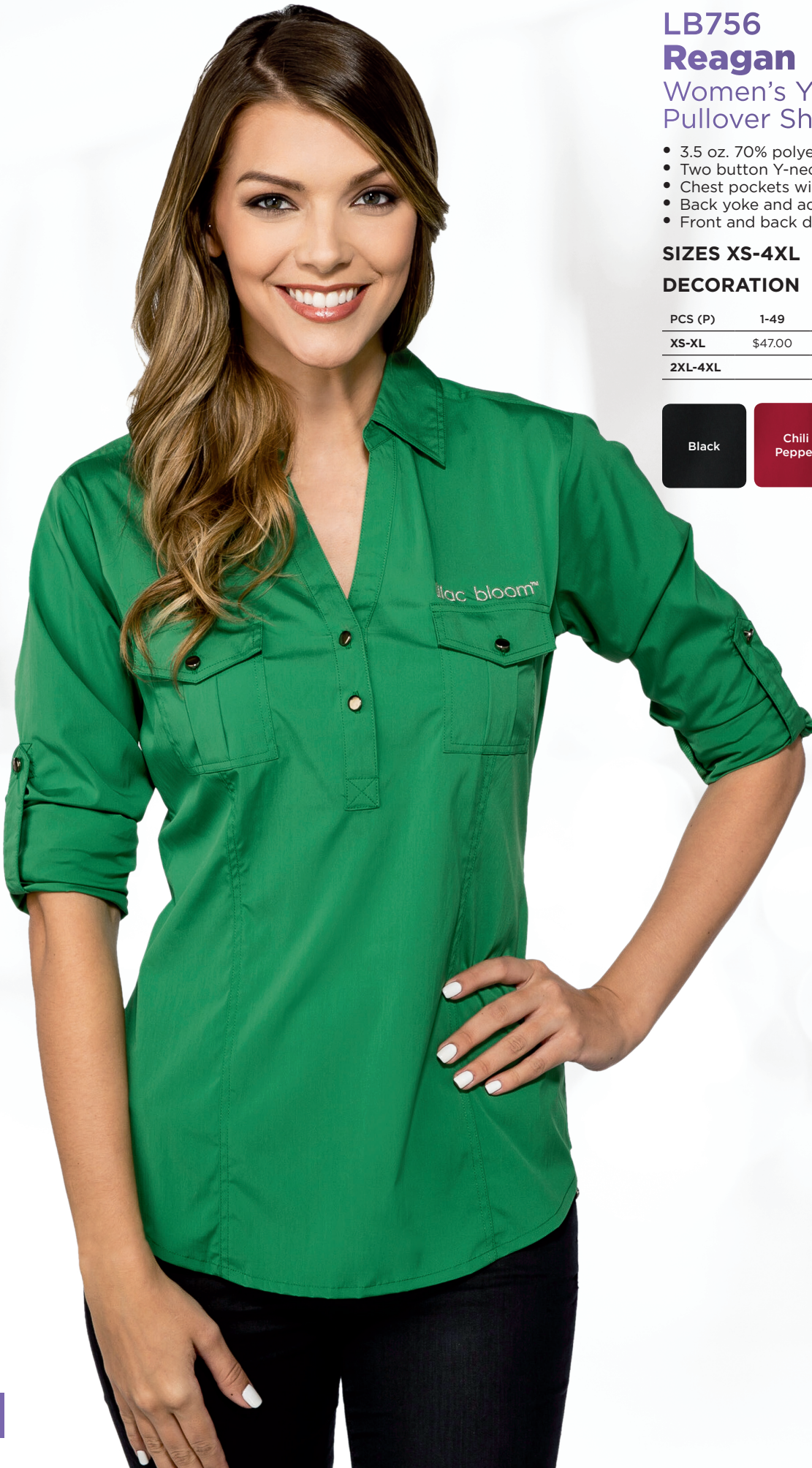
Women's Y-Neckline Pullover Shirt

- 3.5 oz. 70% polyester/27% nylon/3% spandex
- Two button Y-neckline
- Chest pockets with buttoned flaps
- Back yoke and adjustable sleeves
- Front and back darts for a tailored fit

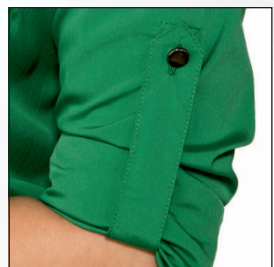
SIZES XS-4XL

DECORATION EMB

PCS (P)	1-49	50-299	300-799	800+
XS-XL	\$47.00	\$44.50	\$42.00	\$39.50
2XL-4XL	add \$3.00 each size up			



Long sleeve view



Buttoned epaulette sleeve

LB758 Amelia

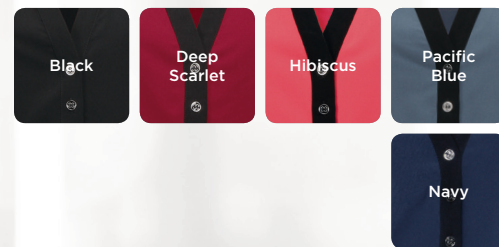
Women's Y-Neckline Tunic

- 5.1 oz. 95% polyester/5% spandex
- 3/4 sleeves with buttoned epaulettes
- Inverted shoulder pleats and back yoke
- Rounded drop tail

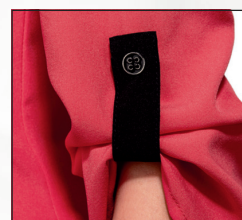
SIZES XS-4XL

DECORATION EMB HT LZR BHT

PCS (P)	1-49	50-299	300-799	800+
XS-XL	\$47.00	\$44.50	\$42.00	\$39.50
2XL-4XL	add \$3.00 each size up			



Back



Buttoned epaulette
3/4 sleeve

LB759 Julianne

Women's Long Sleeve Tunic

- 5.1 oz. 95% polyester/5% spandex
- Adjustable roll-up sleeves with tabs
- Three silver button Y-neckline
- Chest pockets, back yoke and rounded sweep
- Front and back princess seams

SIZES XS-4XL

DECORATION EMB HT LZR BHT

PCS (P)	1-49	50-299	300-799	800+
XS-XL	\$49.00	\$46.50	\$44.00	\$41.50
2XL-4XL	add \$3.00 each size up			



with sleeves down





LB755 Ashley

Women's Cuffed Short Sleeve Blouse

- 5.6 oz. 96% cotton/4% spandex with subtle sheen
- Ruching along front shoulders
- Two-button cuffs and front darts

SIZES XS-4XL

DECORATION **EMB** **HT** **BHT**

PCS (P)	1-49	50-299	300-799	800+
XS-XL	\$45.00	\$42.50	\$40.00	\$37.50
2XL-4XL	add \$3.00 each size up			

Sand

Black

Bright Lilac

Pacific Blue

White



LB757 Meredith

Women's Long Sleeve Open Neck Blouse

- 5.1 oz. 95% polyester/5% spandex
- Bust and front vertical darts
- Back princess seams

SIZES XS-4XL

DECORATION EMB HT LZR BHT

PCS (P)	1-49	50-299	300-799	800+
XS-XL	\$45.00	\$42.50	\$40.00	\$37.50
2XL-4XL	add \$3.00 each size up			



LB970 Taylor

Women's Striped Open Neck Dress Shirt

- 4 oz. 100% cotton
- 50-doubles yarn with wrinkle-resistance
- Bust and front vertical darts
- Back princess seams

SIZES XS-4XL

DECORATION EMB HT BHT

PCS (P)	1-49	50-299	300-799	800+
XS-XL	\$35.50	\$33.50	\$31.50	\$29.50
2XL-4XL	add \$2.00 each size up			



LB925

Emma

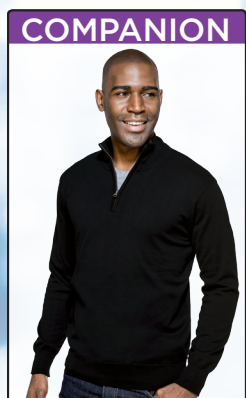
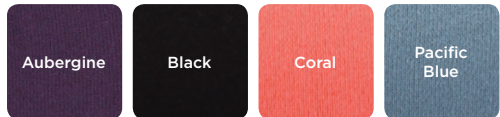
Women's Scoop Neck Sweater

- 82% cotton/18% nylon
- Three-button plackets along front shoulders
- Subtle puff 3/4 sleeves
- Rib-knit collar, cuffs and sweep

SIZES XS-4XL

DECORATION **EMB**

PCS (P)	1-49	50-299	300-799	800+
XS-XL	\$54.50	\$51.50	\$48.50	\$45.50
2XL-4XL	add \$4.00 each size up			



Can be paired with men's SW941, page 174 of 2020 Tri-Mountain Catalog

LB937

Grace

Women's Twisted V-Neck Sweater

- 55% cotton/38% nylon/7% viscose
- Rib-knit cuffs and sweep

SIZES XS-4XL

DECORATION EMB

PCS (P)	1-49	50-299	300-799	800+
XS-XL	\$47.00	\$44.50	\$42.00	\$39.50
2XL-4XL	add \$3.00 each size up			



LB648

Mila

Women's 3/4 Sleeve Knit Cardigan

- 6.7 oz. 95% rayon/5% spandex ultra soft jersey
- 3/4 sleeves with button tab closure
- Extended self-fabric open collar
- Two side seam pockets
- Open cuffs and sweep

SIZES XS-4XL

DECORATION EMB HT BHT

PCS (P)	1-49	50-299	300-799	800+
XS-XL	\$37.50	\$35.50	\$33.50	\$31.50
2XL-4XL	add \$3.00 each size up			



Back



**ULTRA SOFT
KNIT JERSEY
CARDIGAN**

LB929 Isabella

Women's Classic Cardigan Sweater

- 82% cotton/18% nylon
- 3/4-sleeves with rib-knit trim
- Rib-knit collar, placket and sweep
- Dyed-to-match buttons with delicate gold trim
- Two rib-knit trim pockets

SIZES XS-4XL

DECORATION EMB

PCS (P)	1-49	50-299	300-799	800+
XS-XL	\$66.00	\$62.50	\$59.00	\$55.50
2XL-4XL	add \$4.00 each size up			



Gold trim buttons

COMPANION



Can be paired with men's SW941, page 174 of 2020 Tri-Mountain Catalog



LB939

Cora

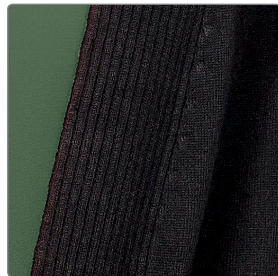
Women's Rib Cardigan Sweater

- 82% viscose/18% nylon
- Rib-knit open collar, placket, cuffs and sweep

SIZES XS-4XL

DECORATION EMB

PCS (P)	1-49	50-299	300-799	800+
XS-XL	\$58.50	\$55.50	\$52.50	\$49.50
2XL-4XL	add \$4.00 each size up			



Placket Detail



Back



**CARDIGAN
SWEATER**

LB924

Ava

Women's Shawl Collar Cardigan Sweater

- 100% acrylic
- Rib-knit trim along collar, cuffs and sweep

SIZES XS-4XL

DECORATION EMB

PCS (P)	1-49	50-299	300-799	800+
XS-XL	\$58.50	\$55.50	\$52.50	\$49.50
2XL-4XL	add \$4.00 each size up			





LB8221

Bailey

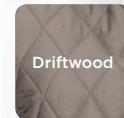
Women's Diamond Quilted Vest

- Windproof/water-resistant 95% polyester/5% nylon
- 2.8 oz. quilted polyfill
- Drawcord waist and princess seams
- Snap front placket and pockets

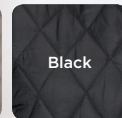
SIZES XS-4XL

DECORATION **EMB**

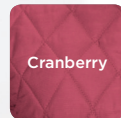
PCS (P)	1-49	50-299	300-799	800+
XS-XL	\$66.00	\$62.50	\$59.00	\$55.50
2XL-4XL	add \$4.00 each size up			



Driftwood



Black



Cranberry



Slate Blue



LB8252 Harper

Women's Quilted Hooded Vest

- Windproof/water-repellant polyester shell with 1.4 oz. polyfill
- 95% polyester/5% spandex peached black jersey lining and side panels
- Hidden side zippered pockets
- Black binding along armhole and inner neckline
- Black drawstring along hood hem
- **EmbAccess™ system** for clean embroidery

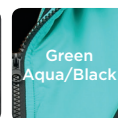
SIZES XS-4XL

DECORATION **EMB**

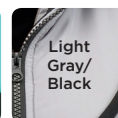
PCS (P)	1-49	50-299	300-799	800+
XS-XL	\$73.50	\$69.50	\$65.50	\$61.50
2XL-4XL	add \$4.00 each size up			



Black/
Black



Green
Aqua/Black



Light
Gray/
Black



Dark
Maroon/
Black



White/
Black



TRI-MOUNTAIN
stretch



TRI-MOUNTAIN
embACCESS



Back

NEW

NEW

LB8872

Aviya

Women's Reversible Bomber Jacket



- Windproof/water-resistant polyester matte satin shell
- 1.4 oz. polyester horizontal quilted lining
- Rib-knit collar, cuffs and sweep
- Metal placket zipper and bicep exterior pocket
- Two welt pockets with snap closure on front side
- Two side seam pockets on reverse side
- **EmbAccess™ system** on both exterior/interior for clean left chest embroidery

SIZES XS-4XL

DECORATION EMB HT

PCS (P)	1-49	50-299	300-799	800+
XS-XL	\$71.50	\$67.50	\$63.50	\$59.50
2XL-4XL	add \$4.00 each size up			



* AVAILABLE END OF SEPTEMBER 2019



Can be paired with men's J8870, page 197 of 2020 Tri-Mountain Catalog



NEW



REVERSE SIDE



EmbAccess™ for clean left chest embroidery on both sides

Wear it in Reverse.



LB8988 Sienna

Women's Soft Shell Velour Hooded Jacket

- 95% polyester/5% spandex shell
- Bonded gray velour lining
- Zippered pockets
- Hidden elastic waistband with adjustable drawcord
- Open cuffs and drop tail sweep
- Attached hood

SIZES XS-4XL

DECORATION EMB HT LZR BHT

PCS (P)	1-49	50-299	300-799	800+
XS-XL	\$88.50	\$84.00	\$79.50	\$75.00
2XL-4XL	add \$4.00 each size up			



Bonded Gray Velour Lining



Back



Lilac Bloom - Companion Ideas

KNITS



LB002
PG.6



LB004
PG.5



LB008
PG.7



K505
PG.56 of 2020
Tri-Mtn Catalog

WOVENS



LB757
PG.22



LB759
PG.20



W700LS
PG.147 of 2020
Tri-Mtn Catalog

WOVENS



LB756
PG.18



W743LS
PG.145 of 2020
Tri-Mtn Catalog



LB755
PG.21



LB708
PG.17



W743SS
PG.145 of 2020
Tri-Mtn Catalog

WOVENS

BOMBER JACKETS



LB8872
PG.32



J8870
PG.197 of 2020
Tri-Mtn Catalog

SOFT SHELL JACKETS



LB8988
PG.33



6400
PG.117 of 2020
Tri-Mtn Catalog

SWEATERS



LB925
PG.24



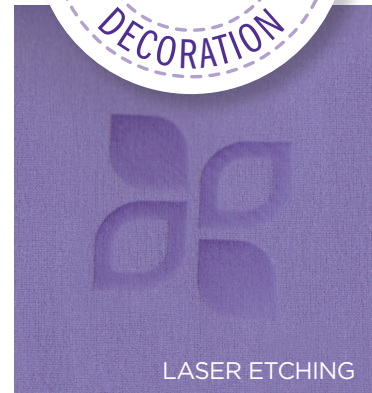
LB929
PG.27



SW941
PG.174 of 2020
Tri-Mtn Catalog



MAKE DECORATION WORRY-FREE



EMBROIDERY

We first launched our Worry-Free Embroidery® Service in 2008. Since then, we've embroidered countless pieces of apparel. Despite newer decorating techniques, this classic decorating method continues to be the most popular decoration choice.

HEAT TRANSFER/ BORDERLESS HEAT TRANSFER

The heat transfer method presses and applies preprinted art onto the garment. The transferred material is digitally printed using the artwork you provide. Heat transfer also includes a Borderless and Glitter Flake option which adds a touch of uniqueness to your garment.

LASER ETCHING

Using laser technology, the top layer of a garment is burned slightly, creating a precise, tonal design. This decoration method gives you more options when selecting your logo size and location.

BE WORRY-FREE!

Save time and money with one point of contact, quick production lead-times, and industry-leading pricing. We control the process from digitization to delivery, freeing you to focus on your job. Let us handle your next decorated project and be Worry-Free!

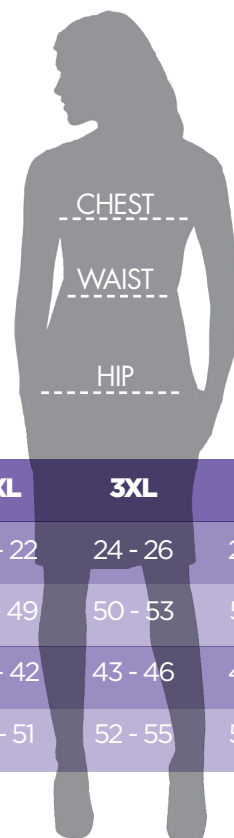
SIZE CHART

IMPORTANT: For the most accurate results, follow the measuring instructions below.

CHEST: Measure just under the arms, across the fullest part of chest, around shoulder blades holding tape firm and level.

WAIST: Measure around your natural waistline, keeping one finger between the tape and the waist.

HIP: In standing position, measure around the fullest point of hips.



Lilac Bloom Styles	XS	S	M	L	XL	2XL	3XL	4XL
Dress Size	2 - 4	4 - 6	8 - 10	12 - 14	16 - 18	20 - 22	24 - 26	28 - 30
Chest (inches)	32 - 34	35 - 37	38 - 40	41 - 43	44 - 46	47 - 49	50 - 53	54 - 57
Waist (inches)	25 - 27	28 - 30	31 - 33	34 - 36	37 - 39	40 - 42	43 - 46	47 - 50
Hip (inches)	34 - 36	37 - 39	40 - 42	43 - 45	46 - 48	49 - 51	52 - 55	56 - 59

Every woman's body is unique. For best results, ask your Authorized Lilac Bloom Distributor to help you obtain a full-size run to try on in person.

Authorized Lilac Bloom Retailer

