

Discover Your Inner Outdoors



EST. 1976

The Collection

2020

[BackpackerApparel.com](http://BackpackerApparel.com)





# Cool Weather Cotton Collection

We are proud to present a new category of cotton apparel to keep you warm & cozy on those chillier days - from velvety corduroy shirts to comfy fleece quarter zips.

*Discover your inner outdoors with Backpacker*

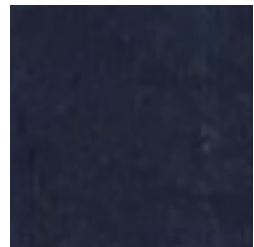
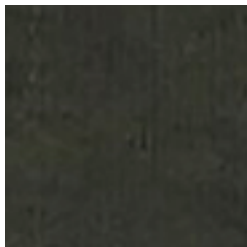


# Cliff Walk Corduroy Shirt

## BP 9155



*Cool Weather Cotton*



**21 Wale 100% cotton corduroy.** Triple needle sewing. Modified spread collar. Two patch pockets. Ultra soft - dresses up or down with equal ease.

**Regular: Sm-3XL Talls: LT- 3XLT. Colors L-R: Olive. Burgundy (shown), Tan & Navy**

**MSRP: \$49.00**





# Ranger Long Sleeve Tee

## BP 9150



**7 oz 100% combed cotton.** Pigment dyed for lustrous color and ultra soft feel. Ribbed neck & cuffs  
**Regular: Sm-3XL Talls: LT- 3XLT.**  
**Colors L-R:** Olive, Burgundy, Dark Steel Blue (shown) & Stone  
**MSRP: \$ 45.00**



# Snug Harbor Waffle Henley

## BP 9152



**6.9 oz 100% combed cotton waffle.** Three logo engraved buttons. Ribbed neck & cuffs  
**Regular: Sm-3XL Talls: LT- 3XLT.**  
**Colors L-R:** Black, Charcoal (shown) & Navy  
**MSRP: \$ 45.00**



# Chatham Light Quarter Zip

## BP 9151

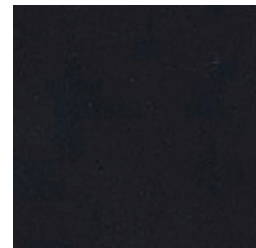
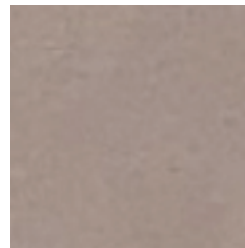
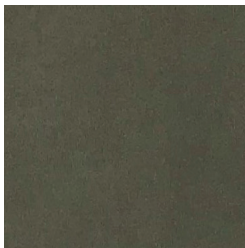
NEW

9.3 oz 80% combed cotton 20% poly brushed fleece.  
Faux suede patch at elbows & zipper accent. Ribbed collar & cuffs

Regular: Sm-3XL Talls: LT- 3XLT.

Colors L-R: Olive (shown right), Burgundy, Tan & Black (shown below)

MSRP: \$ 49.00



# Great Point Fleece Henley

## BP 9156

NEW



9.2 oz 100% combed cotton fleece. Faux suede accent at 3 button placket. Ribbed cuffs & neck.

Regular: Sm-3XL Talls: LT- 3XLT.

Colors L-R: Olive (shown above), Burgundy, Tan & Black (shown left)

MSRP: \$ 49.00



# Outrider Shirt Jac

## BP 7002

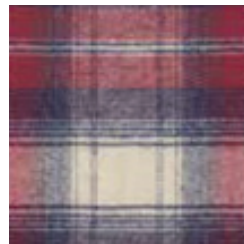
Outerwear



6 oz 100% combed cotton flannel with 2 oz diamond dacron poly quilt lining. Metal snap closures. One snap flap chest pocket & two side pockets. Back shoulder gussets for ease of movement.

**Regular: Sm-3XL Talls: LT-3XLT.**

**Colors L-R: Blue Stuart (Shown), Blue Green, Independent, Black Watch (New) MSRP: \$60.00**





# West Rim Polar Fleece Jacket

## BP 9154

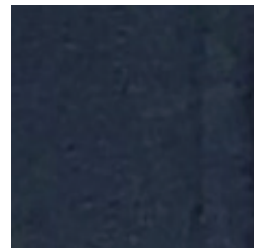
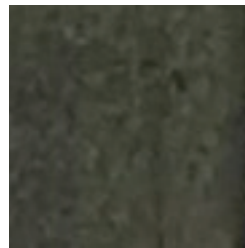
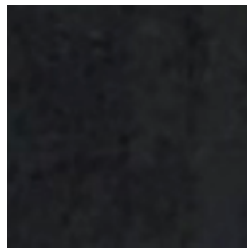


**6.9 oz 100% poly polar fleece.** Three zipper pockets. Adjustable fitting at bottom hem.

**Regular: Sm-3XL Talls: LT- 3XLT.**

**Colors L-R:** Charcoal (shown right), Black, Olive & Navy (shown below)

**MSRP: \$ 49.00**



# Sedona Trail Polar Fleece Vest

## BP 9153



**6.9 oz 100% poly polar fleece.** Three zipper pockets. Adjustable fitting at bottom hem.

**Regular: Sm-3XL Talls: LT- 3XLT.**

**Colors L-R:** Charcoal (shown above), Black, Olive & Navy (shown left)

**MSRP: \$ 39.00**



# Conceal Carry Vest

## BP 7026

7.5 oz 100% cotton canvas shell & 100% poly sherpa lining. YKK zipper. Two hand pockets. Right & left holsters fit most handguns 4 1/2" barrel or less. Magazine pockets on both sides. All easy-access velcro closures. **Colors L-R:** (see below): Black, Stone, Brown (Shown) & Moss  
**Regular: Sm-3XL Talls: LT- 3XLT MSRP: \$100.00**



# Adventurer Vest

## BP 7025

7.5 oz 100% cotton canvas shell & 100% poly sherpa lining. Ykk zipper. Two hand pockets.  
**Regular: Sm-3XL Talls: LT- 3XLT.**  
**Colors L-R: Black, Stone, Brown & Moss MSRP: \$90.00**





# Navigator Jacket with Hood

## BP 7020

7.5 oz 100% cotton canvas shell & 100% cotton plaid flannel lining. Triple needle sewing. YKK zipper with logo gros grain pulls.. Two hand pockets. Two by one ribbed knit collar with pull-cord adjustable hood **Colors:** see below  
**Regular: Sm-3XL Talls: LT-3XLT. Colors:** Black, Brown, Moss (Shown), Stone. **MSRP: \$120.00**



# Navigator Jacket

## BP 7021



7.5 oz 100% cotton canvas shell & 100% cotton plaid flannel lining. Triple needle sewing. YKK zippers with logo gros grain pulls. Two hand pockets. Two by one ribbed knit collar. **Colors L-R:** Black (Shown), Brown, Moss & Stone  
**Regular: Sm-3XL Talls: LT- 3XLT. MSRP: \$100.00**



# Great Outdoors Shirt Jac w/ Micro Polar Fleece BP 7043

**7.5 oz 100% cotton canvas shell & 100% poly micro polar fleece lining.** Metal snaps & rivets. Two patch pockets & two side pockets. Back shoulder gussets for ease of movement.

**Regular: Sm-3XL Talls: LT- 3XLT.**

**Colors: Black, Brown (Shown), Moss & Stone MSRP: \$75.00**



# Great Outdoors Shirt Jac BP 7006

**7.5 oz 100% cotton canvas shell & 100% combed cotton plaid flannel lining.** Metal snaps & rivets. Two patch pockets & two side pockets. Back shoulder gussets for ease of movement.

**Regular: Sm-3XL Talls: LT- 3XLT.**

**Colors: Black, Brown, Moss (shown) & Stone MSRP: \$68.00**





# Heritage Chamois

## BP 7090



*Chamois*

**7.5 oz 100% Brushed cotton chamois.** Triple needle sewing. Hidden button down collar. Two button through flap pockets with one discreet side zip security pocket.

**Regular: Sm-3XL Talls: LT- 3XLT. Colors L-R: Pine, Brown, Stone & Navy**  
**MSRP: \$60.00**





NEW



BP 9101  
Dark Teal



BP 9101  
Black Red



BP 9101  
Dark Steel Blue

## Penobscot Bay Flannel

BP 9101

*Simply traditional*

Flannel



BP 9101  
Navy



BP 9101  
Red

6 oz 100% combed cotton flannel brushed on both sides. Triple needle sewing. Button down collar. One patch pocket. Chambray contrast lining in neckband.

Regular: Sm-3XL Talls: LT- 3XLT.

MSRP: \$ 45.00



NEW



BP 9102  
Navy



BP 9102  
Burgundy

## Canyon Falls Flannel

BP 9102

*A slightly heavier flannel*



BP 9102  
Burnt Orange



BP 9102  
Black Red



BP 9102  
Cocoa

**7 oz 100% combed cotton** flannel brushed on both sides. A heavier weight flannel. Triple needle sewing. Modified spread collar. Two button through flap pockets. Chambray contrast lining in neckband.

**Regular: Sm-3XL Talls: LT- 3XLT.**

**MSRP: \$ 55.00**





BP 7001  
Red Grey



BP 7001  
Black Watch



BP 7040  
Black Red

## Explorer Flannel

BP 7001

*Our signature piece*



BP 7001  
Blue Stuart



BP 7001  
Blue Green



BP 7001  
Independent

**6 oz 100% combed cotton** flannel brushed on both sides. Triple needle sewing. Button down collar. Two button through patch pockets - one with our handy signature pencil pocket. Chambray contrast lining in the yoke, neckband & cuffs.

**Regular: Sm-3XL Talls: LT- 3XLT.**

**MSRP: \$ 48.50**



# Albacore Stretch Flannel

BP 7091

**6 oz 97% combed cotton & 3% Spandex.** Stretch feature allows ease of movement. Hidden button down collar. Two unique button closure mesh lined chest pockets with one discreet side zip security pocket. Venting with mesh fabric allows air circulation. Roll-up button sleeves. Velcro patch in back collar keeps items secure around neck.

**Regular: Sm-3XL Talls: LT- 3XLT.**

**Colors L-R:** Blue Gold, Forest, Rust, Light Teal (Shown right)

**MSRP: \$60.00**



# Classic Solid Flannel

BP 7005



**6 oz 100% combed cotton flannel** brushed on both sides. Button down collar. Two button through flap pockets. Box pleat center back. Logo engraved buttons.

**Regular: Sm-3XL Talls: LT- 3XLT.**

**Colors L-R:** Pine & Navy (Shown)

**MSRP: \$ 48.00**







# Outback Western Shirt

Western Shirts



Long Sleeve BP 7052



Short Sleeve BP 7053

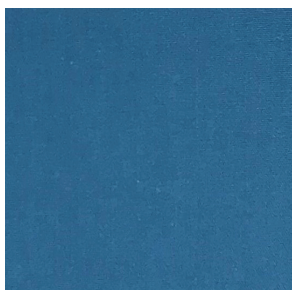


4 oz 55% Cotton 45% Poly BP Yarn. Easy care: wrinkle resist and stain & soil release. UPF 30+ & cooling properties.

True Western yoke. Pearlized snaps. Two snap flap pockets.

Regular: Sm-3XL Talls: LT- 3XLT. Colors L-R: Teal, Stone, Coral, Black

Long Sleeve MSRP: \$48.00 Short Sleeve MSRP: \$46.00





# Big Sky Western Shirt



**Short Sleeve BP 7051**

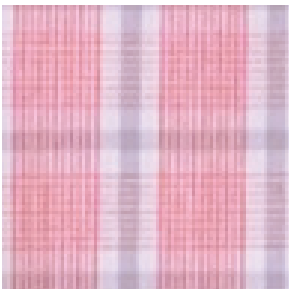


**Long Sleeve BP 7050**



**4 oz 55% Cotton 45% Poly BP Yarn.** Easy care: wrinkle resist and stain & soil release. UPF 30+ & cooling properties. True Western yoke. Pearlized snaps. Two snap flap pockets.  
**Regular: Sm-3XL Talls: LT- 3XLT**  
**Long Sleeve MSRP: \$48.00 Short Sleeve MSRP: \$46.00**

Pink



French Blue



Coral Blue



Navy Black





# Expedition Travel Shirt

## BP 7017



Performance



**4 oz 100% Polyester rip stop.**Hidden button down collar. Two button through flap pockets with one discreet side zip security pocket. Anti-microbial finish. UPF 30+.

**Regular: Sm-3XL Talls: LT- 3XLT. Colors L-R: Twilight, Birch, Navy MSRP: \$60.00**





# Easy-Does-It Micro Check

BP 7011

4 oz 55% cotton 45% poly. Button down collar. One patch pocket. Wrinkle resistant. Stain & soil repellent. Chambray contrast in neckband & yoke.

Regular: Sm-3XL Talls: LT- 3XLT.

Colors L-R: French Blue (shown), Red, Light Blue

MSRP: \$48.00



# Rip Stop Woven

BP 7003



4 oz 55% cotton 45% Poly. Triple needle sewing. Button down collar. Two button through patch pockets - one with our signature pencil pocket. Wrinkle resistant. Stain & soil repellent. Chambray contrast in neckband, yoke & cuffs.

Regular: Sm-3XL Talls: LT- 3XLT

Color: Stone (Shown) MSRP: \$48.00



# Nailhead Woven

## BP 7010



4 oz 55% cotton 45% Poly. Button down collar. One button through patch pocket. Wrinkle resistant. Stain & soil repellent.

**Regular: Sm-3XL Talls: LT- 3XLT.**

**Colors L-R:Gold (shown), Navy**

**MSRP: \$48.00**



# Classic Chambray

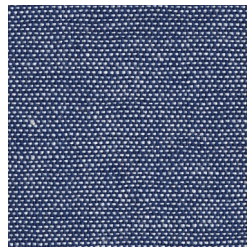
## BP 7004

4 oz 55% cotton 45% poly. Button down collar. Two patch pockets. Wrinkle resistant. Stain & soil repellent

**Regular: Sm-3XL Talls: LT- 3XLT.**

**Colors L-R: Green (Shown), Navy**

**MSRP: \$48.00**





# Slub Chambray

## BP 7019



**4 oz 98% cotton 2% Spandex.** Mechanical stretch for ease of movement. Button down collar. Two button through patch pockets.

**Regular: Sm-3XL Talls: LT- 3XLT.**

**Colors L-R: Black, Beige, Cadet (Shown)**

**MSRP: \$48.00**



# Anytime Anywhere Polo

## BP 7047

**7.5 oz 100% Combed cotton.** Classic knit pique polo. Two button placket. Generous cut for comfort.

**Regular: Sm-3XL Talls: LT- 3XLT. MSRP: \$42.50**

**L-R: Navy, Light Blue, Burgundy (shown), Moss**





# Women's Great Outdoors Shirt Jac

## BP 7032



7.5 oz 100% cotton canvas shell & 100% cotton flannel lining. Metal snaps & rivets. Two patch pockets & two side pockets. Feminine silhouette. Two back shoulder gussets for ease of movement.

Sizes: XS-2XL MSRP: \$68.00

Colors: Black, Stone (Shown) Brown, Moss



Women's

# Women's Outrider Shirt Jac

## BP 7031



6 oz 100% combed cotton flannel with with 2 oz poly fill diamond dacron poly quilt lining. Metal snap closures. One snap flap chest pocket & two side pockets. Feminine silhouette. Two back shoulder gussets for ease of movement.

Sizes: XS-2XL Colors L-R: Blue Stuart, Black Watch, Blue Geen & Independent (Shown) MSRP: \$60.00



# Women's West Rim Polar Fleece Jacket

## BP 9161

NEW

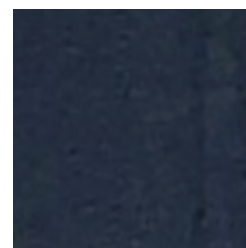
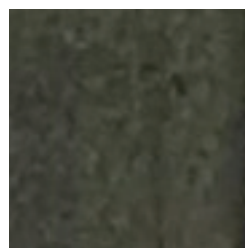
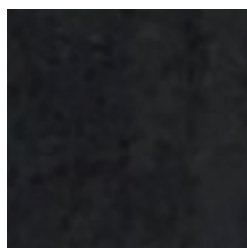
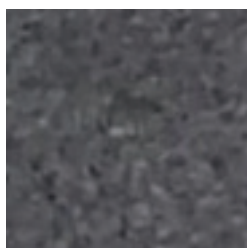


**6.9 oz 100% poly polar fleece.** Feminine silhouette. Two hand pockets.

**Regular: Sm-3XL Talls: LT- 3XLT.**

**Colors L-R:** Charcoal (shown right), Black (shown below), Olive (shown right) & Navy

**MSRP: \$ 49.00**



# Women's Sedona Trail Polar Fleece Vest

## BP 9160

NEW



**6.9 oz 100% poly polar fleece.** Feminine silhouette. Two hand pockets.

**Regular: Sm-3XL Talls: LT- 3XLT.**

**Colors L-R:** Charcoal, Black (shown left), Olive (shown above) & Navy

**MSRP: \$ 39.00**



# Women's Explorer Flannel

## BP 7030



**6 oz 100% combed cotton** flannel brushed on both sides. Triple needle sewing. Spread collar. Feminine silhouette. Chambray contrast lining in yoke, neckband & cuffs.

**Sizes: XS-2X** Colors **Top L-R:** Brick, Black Watch, Red Grey  
**Bottom L-R:** Blue Stuart, Blue Green (shown) Independent.  
MSRP: \$48.50



# Women's Solid Flannel

## BP 7033

**6 oz 100% combed cotton** flannel brushed on both sides. Spread collar. Feminine silhouette.

**Sizes: XS-2XL**

**Colors L-R:** Pine (shown) & Navy

**MSRP: \$48.00**





# Women's Penobscot Bay Flannel

## BP 9130



**6 oz 100% combed cotton flannel.** Feminine silhouette.  
 Modified spread collar. Two patch pockets  
**Regular: XS-2XL Talls: LT- 3XLT.**  
**Colors L-R: Top: Grey, Kelly Green, Bottom L - R :Plum**  
 (shown right), Blue Red.  
**MSRP: \$ 45.00**

# Women's Boyfriend Flannel

## BP 9131



**6 oz 100% combed cotton flannel.** A little longer with a feminine silhouette & some extra room at the bottom to wear untucked.  
 Modified spread collar. Two button through patch pockets.  
**Regular: XS-2XL**  
**Colors L-R Top: Brick, Black Red, Bottom L-R: Red White**  
 (shown left), Black White  
**MSRP: \$ 49.00**



# Women's Nailhead Woven BP 7035



4 oz 55% cotton 45% Poly. Spread collar. Feminine silhouette. Wrinkle resistant. Stain & soil repellent.

Sizes: XS-2XL .

Colors L-R: Gold, & Navy (Shown)

MSRP: \$48.00



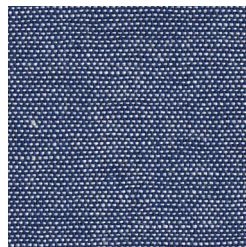
# Women's Chambray BP 7034

4 oz 55% cotton 45% Poly. Spread collar. Feminine silhouette. Wrinkle resistant. Stain & soil repellent.

Sizes: XS-2XL .

Colors L-R: Green (Shown) & Navy

MSRP: \$48.00





# Women's Easy-Does-It Micro Check BP 7036

**4 oz 55% cotton 45% Poly.** Spread collar. Feminine silhouette. Wrinkle resistant. Stain & soil repellent. Chambray contrast in neckband & yoke.

**Sizes: XS-2XL .**

**Colors L-R: French Blue, Red, Light Blue (Shown)**

**MSRP: \$48.00**



# Women's Rip Stop BP 7037



**4 oz 55% cotton 45% Poly.** Triple needle sewing. Spread collar. Feminine silhouette. Wrinkle resistant. Stain & soil repellent. Chambray contrast in neckband, yoke & cuffs.

**Sizes: XS-2XL**

**Color: Stone (shown)**

**MSRP: \$48.00.**





# Women's Snug Harbor Waffle Crew

## BP 9162



**6.9 oz 100% combed cotton waffle**

**Regular: XS-2XL**

**Colors L-R: Black, Salmon, Cream & Red (shown)**

**MSRP: \$ 45.00**



# Around Town Totes

BP 8081



This roomy tote sports our signature plaid flannel and is lined with our heritage blue chambray. Snap tab closure. Inside zipper security pocket. Leather handles with decorative brass tone buckles. Protective metal button feet.

**Size: 22"W x 15"H L - R: Red Grey & Black Watch**

**MSRP: \$100.00**

## The Nomad Collection

### Nomad Satchel

BP 8084



### Nomad Messenger

BP 8083



These sturdy canvas bags are waxed for strength & durability. Lined with our signature plaid flannel both feature an adjustable woven strap & multiple pockets for organization. The Satchel is compact yet roomy enough to fit an electronic tablet. Easy access - hidden Magnetic snap closure under decorative buckle feature. The Messenger easily fits a laptop

**Satchel: 9" W x 12"H Messenger 14" W x 11" H**

**MSRP: \$100.00**



Accessories





# Backpacker Campfire Lounge Pant



**Men's BP 7093**

**6 oz 100% combed cotton flannel** brushed on both sides for extra comfort. Elastic waist with adjustable pull ribbon. Men's have two pockets & one button fly.

**Sizes: Sm-XL**

**Colors L-R:** Red Grey, Blue Green (Shown Left) ,Brick (Shown Right), Black Watch & Black Red **MSRP: \$39.00**



**Women's BP 7038**



## Baseball Caps

### BP 8080

Crown shape six panel cap in our 100% cotton signature plaid flannel. Curved visor. Back strap with velcro closure. One size fits most 57cm.

**Colors:** Independent (shown), **Top:** Blue Stuart, **Bottom:** Blue Green **MSRP: \$22.50**

## Backpacker Fishing Bag

### BP 8078

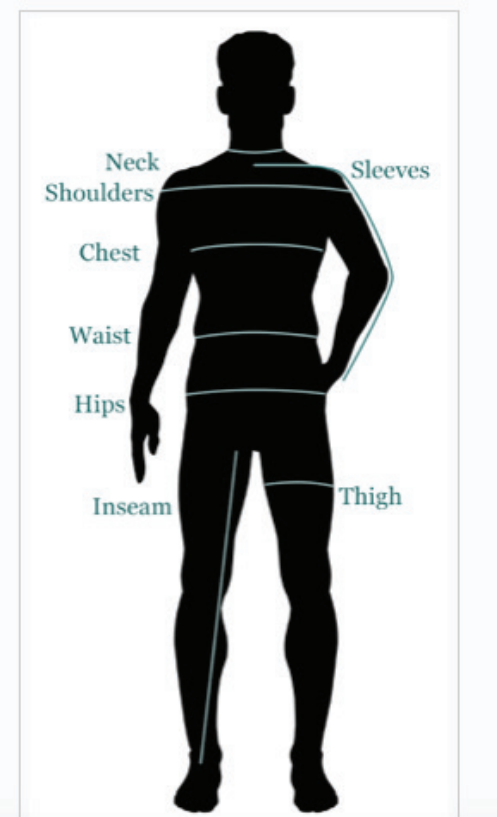
Heavy poly Oxford with PVC coating. Lightweight. Waterproof. Adjustable shoulder strap, girdle & belt. Rubber shoulder pad for comfort. Compact yet with multiple pockets and compartments for organization. All easy-access velcro closures.

**MSRP: \$60.00**





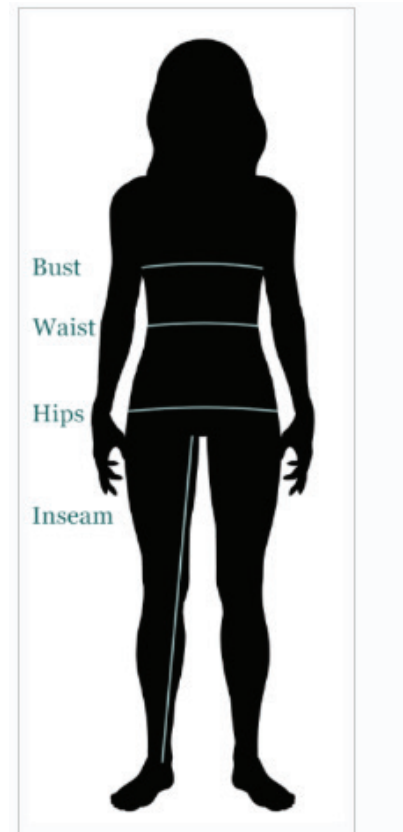
# Men's Size Chart



Size	Chest	Waist	Neck	Sleeve
<b>S</b>	37	36	14 1/2	32 1/2
	39 1/2	38 1/2	15	33 1/2
<b>M</b>	40	39	15 1/2	33 1/2
	43 1/2	42 1/2	16	34 1/2
<b>L</b>	44	43	16 1/2	34 1/2
	47 1/2	46 1/2	17	35 1/2
<b>XL</b>	48	47	17 1/2	35 1/2
	51	50	18	36 1/2
<b>2XL</b>	51 1/2	50 1/2	18 1/2	36 1/2
	54	53	19	37
<b>3XL</b>	54 1/2	53 1/2	19 1/2	37
	58	57	20	38

# Women's Size Chart

Size	Numeric Size	Bust	Waist	Hip	Sleeve
<b>XS</b>	0	29	24	30	29
	2	31 1/2	26 1/2	32 1/2	29
<b>S</b>	4	32	27	33	30
	6	35	30	36	30
<b>M</b>	8	36	31	37	31
	10	38 1/2	33 1/2	39 1/2	31
<b>L</b>	12	39	34	40	32
	14	41 1/2	36 1/2	42 1/2	32
<b>XL</b>	16	42	37	43	33
	18	45 1/2	40 1/2	46 1/2	33
<b>2XL</b>	20	46	41	47	34
	22	49	44	50	34





# Discover Your Inner Outdoors



Inspired by our love of the great outdoors, Backpacker Apparel is rooted in a long tradition of quality manufacturing that has all but disappeared in today's era of disposable clothing. We utilize finer yarns, better fabrics and quality construction to build classic clothing made to last. A family owned & operated business for four generations with 60 years of apparel manufacturing experience, you can trust that every garment we make is ethically produced and of the highest quality.

*Discover your inner outdoors with Backpacker*

**[BackpackerApparel.com](http://BackpackerApparel.com)**